

Diet and Pollinator Role of the Long-Snouted Bat *Platalina genovensium* in Lomas Ecosystem of Peru

Tropical Conservation Science
 October-December 2016: 1–8
 © The Author(s) 2016
 Reprints and permissions:
sagepub.com/journalsPermissions.nav
 DOI: 10.1177/1940082916674288
trc.sagepub.com



Rossana Maguiña¹ and Jessica Amanzo²

Abstract

The long-snouted bat (*Platalina genovensium*) is an endemic nectar-feeding bat from arid regions in western Peru and Chile. In certain areas of its distribution, it is likely the only bat pollinator and seed disperser of plants, and it is currently highly endangered. However, some aspects of its ecology, diet, and pollinator role remain unknown, especially in the unique and endangered lomas ecosystem. We conducted monthly evaluations of bats and plants over 15 months in the lomas of the National Reserve of Lachay (Peru) by sampling in three different plant communities along the Guayabito gorge. We collected fecal and pollen fur samples from 16 individuals of *P. genovensium* and recorded the phenology of its potential plant food resources. We differentiated fecal sample components and then identified and counted all pollen morphotypes in order to estimate their frequency and abundance in the samples. We also analyzed the niche breadth. Our results showed that the dietary components of *P. genovensium* included nectar, pollen, fruits, and insects, and that it utilized the cacti community for feeding. Pollen of the genus *Haageocereus* (Cactaceae) was the most frequent and abundant resource recorded, which was available all year long; moreover, the niche breadth analysis revealed that *P. genovensium* has a specialized diet on the *Haageocereus* cactus in Lachay. Finally, we suggest that *P. genovensium* could serve as a pollinator for *Haageocereus acranthus*, *Haageocereus pseudomelanostele*, and *Puya ferruginea* (Bromeliaceae) due to the large pollen loads it carries and the specific placement of pollen on different body zones.

Keywords

ecology, *Haageocereus*, Lachay, nectar-bat, pollination

Introduction

Along the arid regions of western South America dwells the endemic long-snouted bat *Platalina genovensium* (Phyllostomidae: Lonchophyllinae), a nectar-feeding species distributed from northern Peru to northern Chile, with an elevation from near sea level to 2,500 m above sea level (masl; Ossa, Vilchez, & Valladares, 2016; Sahley & Baraybar, 1996; Velazco, Cadenillas, Centy, Huamani, & Zamora, 2013). This species attracts particular attention due to its rare occurrence along its described geographical distribution, unique morphology (long skull and long body size, Simmons & Wetterer, 2002), monotypic status (only species in the genus), phylogenetic position, and threatened status (Velazco et al., 2013). In addition, it may be the only potential bat pollinator and seed disperser of plants in some areas of its distribution (Sahley & Baraybar, 1996). Previous studies have suggested that its presence in arid regions is related

to the presence of columnar cacti species, such as *Weberbauerocereus weberbaueri*, el candelabro *Browningia candelaris* (Sahley & Baraybar, 1996), *Neoraimondia arequipensis* (Aragón & Aguirre, 2007; Malo de Molina, Velazco, Pacheco, & Robledo, 2011), *Corryocactus brevistylus* (Aragón & Aguirre, 2007), *Armatocereus procerus*, and *W. rauhii* (Zamora et al., 2013). Moreover, its particular morphology (long forearm, long skull, and great body weight) places it within

¹Biology Department, University of Missouri at St. Louis, MO, USA

²Facultad de Ciencias y Filosofía, Universidad Peruana Cayetano Heredia, Peru

Received 9 August 2016; Revised 16 September 2016; Accepted 19 September 2016

Corresponding Author:

Rossana Maguiña, Biology Department, University of Missouri at St. Louis, MO 63121, USA.

Email: nrmaguina@gmail.com



the so-called *cactophilic bats* (Simmons & Wetterer, 2002). In fact, two studies in southern Peru that evaluated the diet of *P. genovensium* from fecal samples recorded pollen, fruits seeds, or fruit pulp belonging to the cacti species *W. weberbaueri* (Sahley & Baraybar, 1996), *W. rauhii*, and *A. procerus* (Zamora et al., 2013). Particularly, Sahley and Baraybar (1996) recorded a high dependence of *P. genovensium* on the columnar cactus *W. weberbaueri* in arid zones of southwestern Peru. There are no other studies describing the diet and pollinator role of *P. genovensium* in different areas of its distribution.

Previous studies also described several threats affecting *P. genovensium* populations, which Velazco et al. (2013) summarized as follows: (a) a decline of columnar cacti populations due to the expansion of human population centers, (b) human disturbance of roost sites, and (c) hunting pressure due to traditional medicinal uses. These anthropogenic factors endanger *P. genovensium* populations; therefore, this species is included in red lists, as near threatened in the IUCN (2015) and critically endangered in Peruvian orders (Ministerio de Agricultura, 2004).

In arid regions where *P. genovensium* occurs, there is also a unique ecosystem called the lomas formation. This ecosystem is formed by coastal small hills (or lomas) located along the Pacific desert, where islands of vegetation are supported by seasonal, marine fog (Dillon & Hoffmann, 1997). This ecosystem harbors the highest diversity of organisms along the coastal arid regions, many of which are endemic to the lomas. For instance, more than 40% of recorded plant species in the lomas are endemic species (Duncan & Dillon, 1991). The lomas ecosystem is threatened by the advance of human populations and human recreational activities (Cavieres et al., 2002; Pinto, Barria, & Marquet, 2006), cattle, and deforestation (Dillon & Hoffmann, 1997).

In this study, we addressed four specific questions about the diet and pollinator role of *P. genovensium* in the lomas, an ecosystem where the species has not been studied. First, what are the dietary components (e.g., insects, fruits, plants) of *P. genovensium*? Second, which plants does *P. genovensium* feed on? Third, does *P. genovensium* have a generalist or specialist diet? Finally, could *P. genovensium* be a pollinator for the plant species it feeds on? Answers to these research questions will help to more accurately inform appropriate conservation actions and improve current management efforts for this endangered bat species in the unique lomas ecosystem.

Methods

Study Area

We conducted the study in the Guayabito gorge (11°21'30" S, 77°22'10" W), located in the northeastern

part of the National Reserve of Lachay (Lachay, from this point forward) in Lima, Peru (Figure 1). Lachay preserves more than 5000 ha of coastal lomas (0–800 masl; Cano et al., 1999). This ecosystem is characterized by a seasonal presence of fog coming from the ocean, which allows for the growth of vegetation with a high degree of endemism (Dillon & Hoffmann, 1997). The weather and vegetation vary seasonally throughout the year. The drier season (November–May) is characterized by high temperatures (20°C–23°C) and low relative humidity (90%–83%), while the humid season (June–October) is marked by low temperatures (13°C–16°C) and high relative humidity (95%–100%; Kunimoto, De La Cruz, Arana, & Ramírez, 2002). We conducted monthly evaluations of bat and plant communities between September 2012 and November 2013.

Bats Capture

We assembled mist nets for bat capture in three different plant communities in the Guayabito gorge: (a) herbaceous and semi-woody plants (i.e., where herbaceous plants were dominant with some semi-woody plants present), (b) woody plants (i.e., areas with trees even though they were not the dominant life forms), and (c) cacti and succulent plants (i.e., dominated by cacti). We assembled four to six mist nets per plant community (mist net sizes: length 6, 9, or 12 m; height 3 m) at different heights (0–4 m). We operated mist nets from 1800 to 0100 h during two nights per month. After capture, we extracted pollen from the fur by gently pressing transparent adhesive tape against four different body zones (Muchhala & Jarrín-V, 2002): snout, head (above the eyes), back, and chest. We kept captured bats in cloth bags for 2 h to allow for fecal sample collection, which were preserved in 70% ethanol (Maguiña, Amanzo, & Huamán, 2012). After samples collection, all individuals were released. All procedures complied with the “Guidelines of the American Society of Mammalogists for the use of wild mammals in research” (Sikes, Gannon, and the Animal Care and Use Committee of the American Society of Mammalogists, 2011); in addition, the Institutional Ethics Committee from Universidad Peruana Cayetano Heredia approved our capture and collection procedures.

Plant Phenology

We established 12 10 × 10 m plots to monitor plant phenology in the same plant communities mentioned earlier, with four plots per plant community separated from one another by at least 100 m. To evaluate phenology, we recorded and counted the numbers of buds and flowers of species potentially visited by bats. Additionally, we sampled flowers from all available plant species in Guayabito gorge to establish a pollen reference collection.

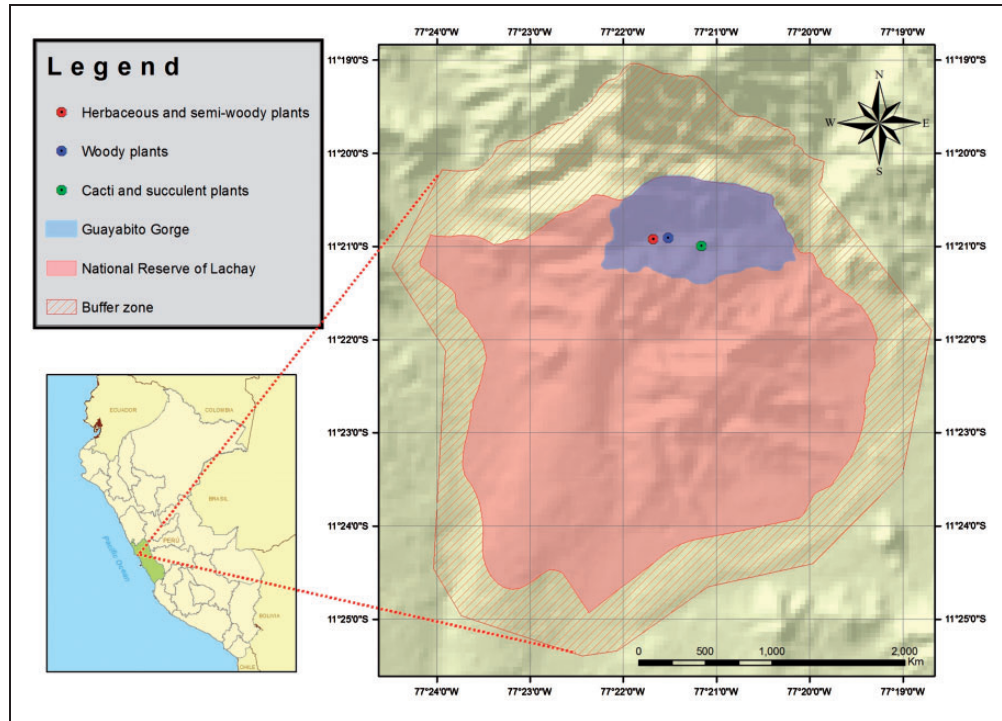


Figure 1. Study area in the national reserve of Lachay.

Sample Analysis

In the laboratory, we observed pollen samples collected from the fur under the microscope at 10× to 40× magnification. We subjected fecal samples to stereoscope observation and Erdtman's acetolysis process before microscopic observations at 40× magnification (two slides per sample, following the methodology of Maguiña et al. [2012]). We recorded four categories of fecal sample components: (a) pollen, (b) plant tissue, (c) seeds, and (d) insects. We identified and counted all pollen morphotypes to calculate frequency and abundance per plant species. Based on frequencies and abundance of pollen, we calculated Levins standardized Index (B_A) to analyze niche breadth. B_A ranges from 0 (only one resource used) to 1 (all available resources used evenly; Krebs, 1999).

Results

Diet and Pollinator Role of *P. genovensium*

We captured 16 individuals of *P. genovensium*. We collected fecal samples from 7 individuals and pollen fur samples from 16 individuals (56 adhesive tape samples in total). Ten of the bats were captured in the herbaceous plant community while the remaining were captured in the cacti and succulent plant community. None were captured in the woody plant community. The fecal samples contained the following dietary components: pollen

(100% of the samples), plant tissues (42.8%), and insects (14.3%); we did not record seeds in the samples. The pollen samples from both the fecal and fur samples belonged to nine plant taxa, with *Haageocereus* being the most frequent ($N = 16$) and abundant (>90% of all pollen grains recorded), followed by cf. *Senecio lomincola* (Asteraceae), *Puya ferruginea* (Bromeliaceae), and cf. Solanaceae (Figure 2).

Using pollen frequencies, the B_A was 0.6965, which indicates a wide niche breadth. But if we based our calculation on pollen abundance, the B_A fell to 0.0164, which indicates a narrow niche breadth. To evaluate if *P. genovensium* could serve as an efficient pollinator, we calculated the average number of pollen grains carried by bats per plant species. *Haageocereus* was the highest by nearly an order of magnitude (6,082 grains), followed by cf. Solanaceae (871 grains), and *P. ferruginea* (235 grains; Table 1). We mainly observed *Haageocereus*' pollen on the snouts (47.4%) and heads (38.5%), while *P. ferruginea* was found mainly on the back (78.4%). The other pollen grains (cf. Solanaceae and 3-colporate morphotype) shared snout and head placement with *Haageocereus* (Figure 3).

Plant Phenology

We recorded phenology for nine potentially bat-visited plant species: *Stenomesson coccineum* (Amaryllidaceae), *P. ferruginea* (Bromeliaceae), *Haageocereus acranthus*

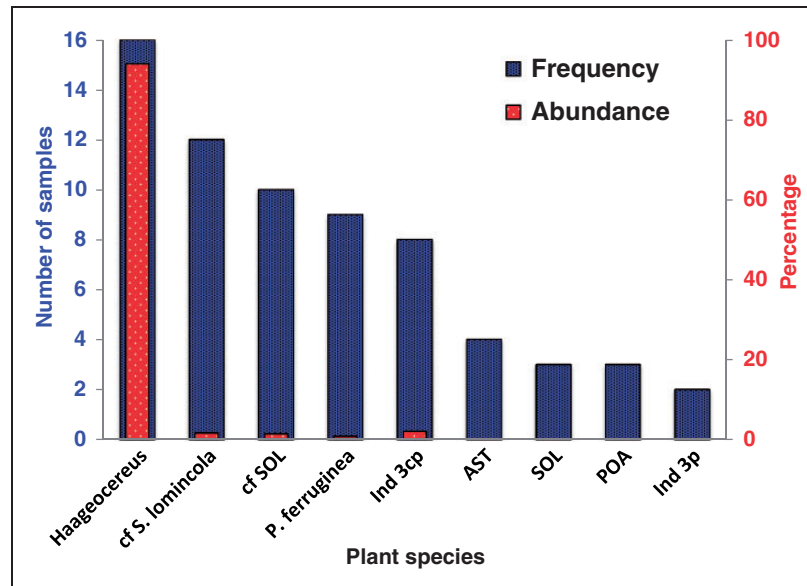


Figure 2. Frequency (left axis) and abundance (right axis) of plant species recorded in fecal and fur samples of *Platalina genovensium* based on pollen analysis. cf. SOL = cf. Solanaceae; Ind 3cp = Indeterminate 3-colporate; AST = Asteraceae; SOL = Solanaceae; POA = Poaceae; Ind 3p = Indeterminate 3-porate.

Table 1. Frequency and Average Abundance of Pollen Grains per Plant Species Carried on *Platalina genovensium*'s Fur.

Plant species	Frequency	Average abundance of pollen grains
Cactaceae <i>Haageocereus</i> spp.	10	6082.4
cf. Solanaceae	4	871.0
Bromeliaceae <i>Puya ferruginea</i>	5	235.8
Indeterminate 3-colporate	7	68.7
Asteraceae cf. <i>Senecio lomincola</i>	9	5.4
Asteraceae	2	5.0
Poaceae	2	1.0

subsp. olowinskianus, *Haageocereus pseudomelanostele* (Cactaceae), *Capparis prisca* (Capparidaceae), *Caesalpinia spinosa* (Fabaceae), *Exodeconus prostratus*, *Nolana difusa*, and *Nicotiana paniculata* (Solanaceae). The species of Cactaceae and Solanaceae families presented the longest blooming periods throughout the year, with *H. acranthus* blooming for almost the whole year. The remaining species had shorter blooming periods, which lasted between 2 and 6 months (Figure 4). We recorded four of these species in *P. genovensium*'s diet: *H. acranthus*, *H. pseudomelanostele*, and *P. ferruginea*.

Discussion

For the first time, we present information about the diet and pollinator role of *P. genovensium* in the lomas

ecosystem. We found that its diet is mainly composed of floral resources and added at least four new plant species to the list of its consumed resources. This bat mainly feeds from the cacti species of the genus *Haageocereus* suggesting that its diet is fairly specialized on these resources. Finally, we found that *P. genovensium* carries large pollen loads and that the placement of pollen from different plant species is on different body parts of the bat, suggesting that *P. genovensium* likely serves as a pollinator for the cacti species *Haageocereus acranthus* and *H. pseudomelanostele* as well as the bromeliad species *P. ferruginea*.

Our capture results show that *P. genovensium* is most common in herbaceous plant communities within the lomas. We also captured several individuals in cactus-dominated communities, which was an expected result because cactus pollen and nectar serve as important food resources (Sahley & Baraybar, 1996). Bats captured in both herbaceous and cactus-dominated communities had abundant cacti pollen on their fur, implying that bats feed primarily in cactus-dominated plant communities and only use the herbaceous plant communities to reach other feeding areas. *P. genovensium* may prefer to commute across herbaceous, rather than woody, plant communities, as these bats are known to fly close to ground level (Velazco et al., 2013).

The diet of *P. genovensium* in the lomas of Lachay was composed mainly of floral resources (nectar and pollen) and complemented by other plant resources and insects. Contrary to the studies of Sahley and Baraybar (1996) and Zamora et al. (2013), we did not find seeds, but we

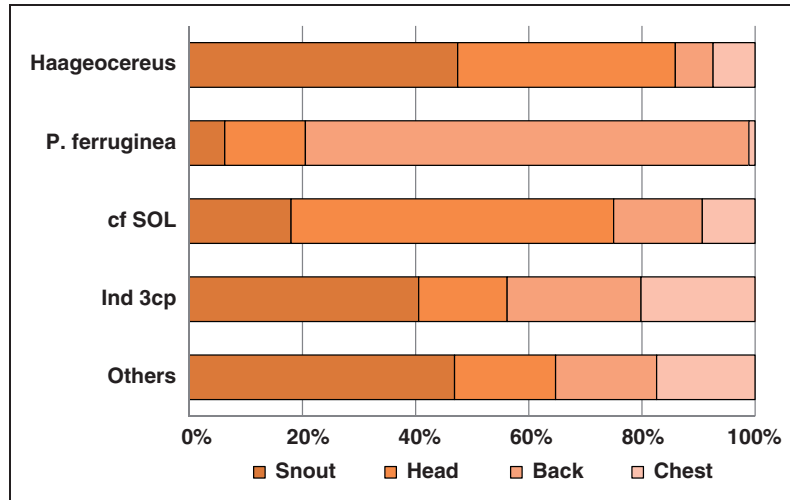


Figure 3. Percentage of pollen per plant species placed in different bat's body zones. cf. SOL = cf Solanaceae; Ind 3cp = Indeterminate 3-colporate.

did find vegetative tissues that were possibly derived from fruits. The B_A based on pollen frequencies was higher (0.6965) than the B_A based on pollen abundance (0.0164). We suspect that the low sample size ($N=16$) inflated the value of B_A based on pollen frequencies. Therefore, the abundance-based niche breadth might be a more precise representation of the species' ecology. For this reason, we concluded that the population of *P. genovensium* in Lachay is fairly specialized on *Haageocereus* cacti. There is a scarcity of information about measurements of niche breadth for *P. genovensium* or other nectarivorous bats. We found only one study for the nectarivorous tailed tailless bat *Anoura caudifer* (Maguiña et al., 2012), and in its cloud forest ecosystem, the authors reported a low B_A value (0.045, based on pollen abundance). On account of the large number of resources available for bats in cloud forests, we expected that *P. genovensium* would show a narrower niche breadth due to their more arid ecosystem, where the number of food resources is relatively limited.

In total, we recorded nine different plant taxa in fecal and fur pollen samples, from five plant families. Due to their ecology and floral characteristics, we consider that only Cactaceae, Bromeliaceae, and Solanaceae families are actively sought out by *P. genovensium* during foraging. Asteraceae flowers are rarely used and pollinated by bats (Pruski & Sancho, 2004); we suspect that its occasional appearance in pollen samples is due to its high abundance in the lomas and the low flying activity of bats, which would bring their bodies close to these plants. Similarly, pollen of Poaceae could be ingested or attached to bat's fur during flight. Additionally, pollen abundance of Asteraceae and Poaceae was low compared with the other families registered (Table 1). Before our study, the known diet of *P. genovensium* included only

four species of cactus: *W. weberbaueri*, the candelabro *Browningia candelaris* (Sahley & Baraybar, 1996), *W. rauhii*, and *A. procerus* (Zamora et al., 2013). Our findings add at least four new plant species to the species' diet.

The genus *Haageocereus* had the highest frequency of occurrence in the samples. We recorded two species of *Haageocereus* in the Guayabito gorge, *H. acranthus* and *H. pseudomelanostele*, but due to their similarity, it was not possible to identify *Haageocereus* pollen to species level. Both species present floral characteristics (corolla funnel shape, pale colors, high nectar, and pollen production) similar to other cacti used by bats, such as the organ pipe cactus (*Stenocereus thurberi*) in northern Mexico (Fleming, Sahley, Holland, Nason, & Hamrick, 2001), *W. weberbaueri* in southwestern Peru (Sahley & Baraybar, 1996), *Pachycereus pecten-aboriginum* in western Mexico (Tschapka, Sperr, Caballero-Martínez, & Medellín, 2008), and *Pilosocereus moritzianus*, *Subpilocereus repandus*, and *Subpilocereus horrispinus* in northern Venezuela (Nassar, Ramirez, & Linares, 1997). Moreover, they both have long blooming periods, thus offering food resources to bats all year long. We highlight that this is the first record of *Haageocereus* being visited by nectarivorous bats. The species *P. ferruginea* (Bromeliaceae) was previously recorded as consumed by bats, particularly in lower elevations of its distribution (Kessler & Krömer, 2000). *P. ferruginea* possesses extremely large inflorescences capable of producing many flowers attractive to bats. Other bat-pollinated plant characteristics include its inconspicuous flower color and tube-shape corolla. Within the family Solanaceae, we recorded two taxa consumed by bats. In spite of this, these plant species did not possess as many characteristics related to bat-consumption as the previous cases. It is

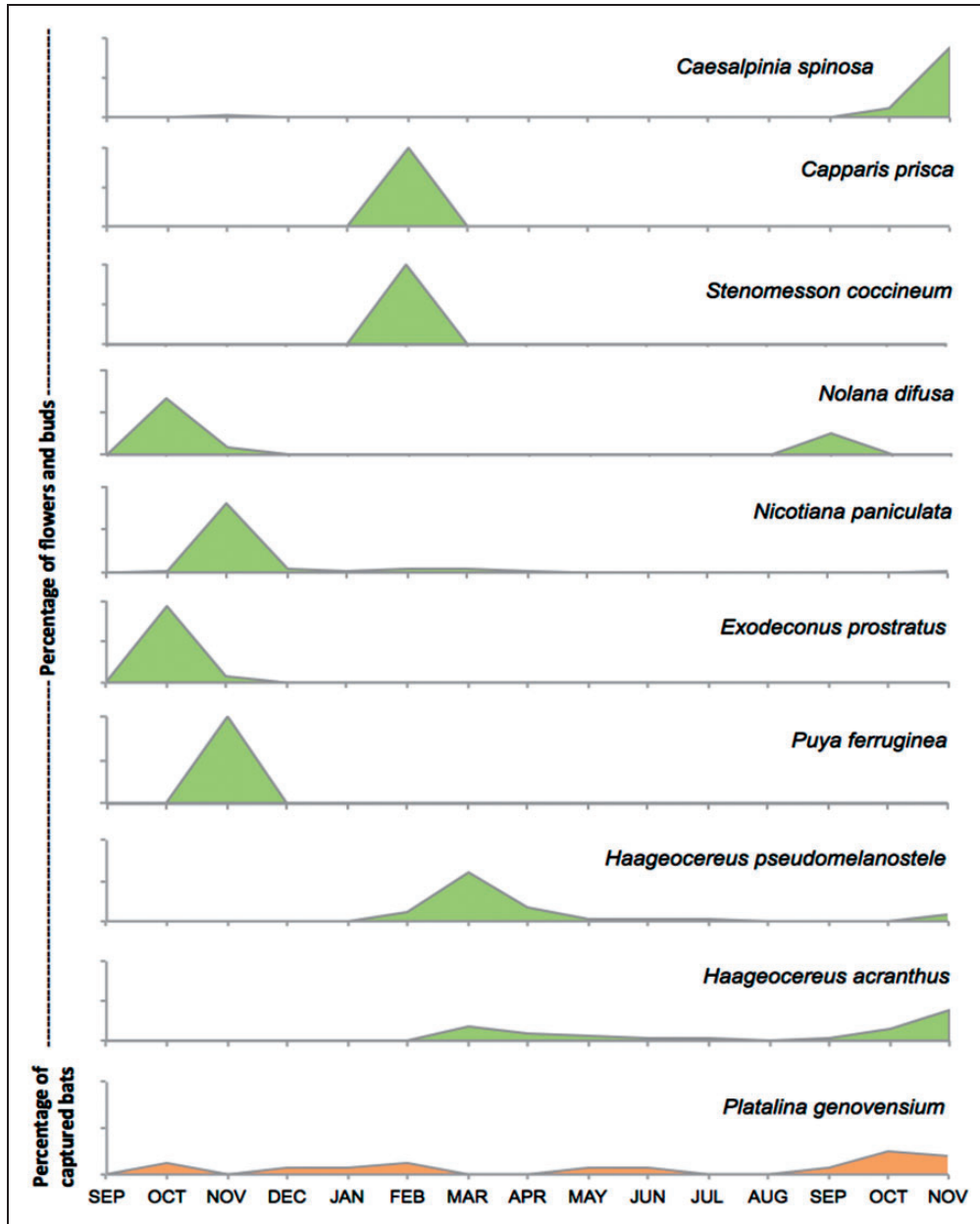


Figure 4. Percentage of flowers and buds per plant species and percentage of captured bats along the study period (September 2012–November 2013).

possible that long-snouted bats feed on it to complement their diets.

The number of pollen grains carried by long-snouted bats showed their capacity for transferring large amounts of pollen. Logically, the amount of transported pollen will vary according to the amount of pollen produced per plant species. The largest amount of transported pollen was from *Haageocereus*, which could be explained by larger amounts of produced pollen, given the increased number of stamens (>100, Nassar et al., 1997) compared with other plant species recorded in the

samples (≤ 6). Previous studies of cacti pollination biology report that a cactus stigma potentially holds more than 10^4 pollen grains, while the mean number of ovules per flower exceeds 1,000 (Nassar et al., 1997). We predict that *P. genovensium* likely acts as an efficient pollinator because the amount of *Haageocereus* pollen carried by individual bats would be large enough to fertilize the ovules. At the same time, additional pollinator exclusion experiments are required to confirm the pollinator role of *P. genovensium* for species of *Haageocereus*.

The placement of pollen on different body parts also supports the pollinator role of *P. genovensium*. In the case of *Haageocereus* pollen, which was mainly located on the snout and head, we posit that each anatomical position corresponds with the two *Haageocereus* species; the pollen on the snout possibly corresponds to *H. pseudomelanostele*, which has shorter flowers (corolla length = $5.05 \text{ cm} \pm 0.42$, from the base of nectar chamber to upper-corolla), while the pollen on the head possibly corresponds to *H. acranthus*, which has larger flowers (corolla length = $7.7 \text{ cm} \pm 0.53$). Further studies are necessary to test this hypothesis and the precision of pollen transfer for avoiding interspecific transfer between *H. acranthus* and *H. pseudomelanostele*, considering the similar morphology of the flowers, including actinomorphic corollas and the spiral arrangement of the numerous stamens. If this hypothesis is supported, this would be a new example of how variation in placement of pollen on the bodies of bats can reduce the competition for pollination among sympatric species, as demonstrated for other bat-pollinated species of the genera *Burmeistera* (Muchhala & Potts, 2007) and *Marcgravia* (Tschapka, Dressler, & von Helversen, 2006).

With regard to the other pollen morphotypes, *P. ferruginea* showed specific placement on the back of bats (80%). Given the plants' large corolla and stamens, this placement diminishes the probability of foreign pollen reaching the stigma. It is unclear whether *P. genovensium* is a relevant pollinator for other species (e.g., Solanaceae). The small pollen size in Solanaceae (smaller than *Haageocereus* and *P. ferruginea*), the small amount of pollen carried by bats, and placement on the same bat body zones as *Haageocereus* and *P. ferruginea* pollen could complicate successful pollen delivery to the stigma of Solanaceae species.

Implications for Conservation

The lomas in Lachay offers important food resources for the *P. genovensium* population, and this study provides incentives to preserve this unique ecosystem and the species that inhabit it. The food resources for *P. genovensium* principally occur in cactus- and succulent plant-dominated communities. While we only evaluated one of the many gorges present in Lachay, others are commonly dominated by cacti and may also provide critical food resources for these endangered bats, as well as roosts and mating sites. Currently, the Peruvian National System of Protected Areas includes only the Natural Reserve of Lachay (5,070 ha) and the Reserved Zone Lomas de Ancon (10,962 ha). Although lomas occur in approximately 40 more sites along the coastal Peruvian desert (Sernanp-Perú, 2016). And in Chile, the National System of Wild Protected Areas do not include any lomas ecosystem (Conaf-Gobierno de Chile, 2016).

As mentioned earlier, one of the threats affecting *P. genovensium* populations is the decline of columnar cacti due to the expansion of human population centers (Velazco et al., 2013). The *Haageocereus* species mentioned in this study are also under high risk; both species are endemic to the desert scrub in central and northern Peru (Calderón Moya-Méndez, Ceroni Stuva, & Ostolaza Nano, 2004). Moreover, *H. acranthus* spp. *olowinskianus* and *H. pseudomelanostele* were categorized as vulnerable and endangered, respectively, by the study of Calderón Moya-Méndez et al. (2004). Therefore, we suggest taking additional actions to preserve wider areas of lomas, especially if they harbor *Haageocereus* cacti species, in order to preserve *P. genovensium* populations.

Acknowledgments

The authors are grateful to all the volunteers for assistance during fieldwork. Carlos Ostolaza for helping in the identification of cacti species. Luis Huamán, director of Laboratorio de Palinología y Paleobotánica at Universidad Peruana Cayetano Heredia, where we conducted the pollen analysis. Michael O. Dillon for providing literature about the lomas ecosystem. Michael Montague, Leighton Reid, Nathan Muchhala, Mónica Carlsen, Serena Achá, Diana Gamba, Camilo Calderón-A, and anonymous reviewers for their suggestions to improve an early manuscript version of this study. The National Reserve of Lachay granted permission to work in the study area.

Declaration of Conflicting Interests

The author(s) declared no potential conflicts of interest with respect to the research, authorship, and/or publication of this article.

Funding

The author(s) disclosed receipt of the following financial support for the research, authorship, and/or publication of this article: This study was partially supported by the Ann Kotowski Grant from Universidad Peruana Cayetano Heredia.

References

- Aragón, G., & Aguirre, M. (2016). Conservación, distribución y densidad poblacional de *Platalina genovensium* (Thomas, 1928) en las Lomas del Morro Sama, distrito de Sama, Provincia de Tacna [Conservation, distribution and population density of *Platalina genovensium* (Thomas, 1928) in Morro Sama Lomas, Sama district, Tacna Province]. *Zonas Áridas*, *11*, 219–232.
- Calderón Moya-Méndez, N., Ceroni Stuva, A., & Ostolaza Nano, C. (2004). Distribución y estado de conservación del género *Haageocereus* (Familia Cactaceae) en el departamento de Lima, Perú [Distribution and state of conservation of the genus *Haageocereus* (Cactaceae Family) in the department of Lima, Peru]. *Ecología Aplicada*, *3*, 17–22.
- Cano, A. C., Roque, J., Arakaki, M., Arana, C., La Torre, M., Llerena, N., ... Refulio, N. (1999). Diversidad florística de las Lomas de Lachay (Lima) durante el evento "El Niño 1997–98" [Floristic Diversity of Lomas of Lachay (Lima) During

- “El Niño 1997–98” event]. *Revista Peruana de Biología*, 6, 125–132.
- Cavieres, L. A., Arroyo, M. T., Posadas, P., Marticorena, C., Matthei, O., Rodríguez, R., ... Arancio, G. (2002). Identification of priority areas for conservation in an arid zone: Application of parsimony analysis of endemism in the vascular flora of the Antofagasta region, northern Chile. *Biodiversity & Conservation*, 11, 1301–1311.
- Conaf-Gobierno de Chile. (2016). *Parques Nacionales*. Retrieved from <http://www.conaf.cl>.
- Dillon, M. O., & Hoffmann, A. E. (1997). Lomas formations of the Atacama desert, Northern Chile. In: S. D. Davis, V. H. Heywood, O. Herrera-McBryde, J. Villa-Lobos, & A. C. Hamilton (Eds.). *Centers of plant diversity, a guide and strategy for their conservation* (pp. 528–535). Oxford, UK: WWF Information Press.
- Duncan, T., & Dillon, M. O. (1991). Numerical analysis of the floristic relationships of the lomas of Peru and Chile. *American Journal of Botany*, 78, 183.
- Fleming, T. H., Sahley, C. T., Holland, J. N., Nason, J. D., & Hamrick, J. L. (2001). Sonoran Desert columnar cacti and the evolution of generalized pollination systems. *Ecological Monographs*, 71, 511–530.
- IUCN. (2015). *IUCN red list of threatened species version 2015–4*. Retrieved from <http://www.iucnredlist.org>.
- Kessler, M., & Krömer, T. (2000). Patterns and ecological correlates of pollination modes among bromeliad communities of Andean forests in Bolivia. *Plant Biology*, 2, 659–669.
- Krebs, C. J. (1999). *Ecological methodology* 2nd ed. Menlo Park, CA: Addison-Wesley Educational Publishers, Inc. Benjamin/Cummings.
- Kunimoto, C., De La Cruz, C., Arana, M., & Ramírez, O. E. (2002). Observaciones sobre la ecología poblacional del ratón doméstico en Lachay, Perú [Notes on the population ecology of the domestic mouse in Lachay, Peru]. *Bulletin de l'Institut français d'études andines*, 31, 323–328.
- Maguiña, R., Amanzo, J., & Huamán, L. (2012). Dieta de murciélagos filostómidos del valle de Kosñipata, San Pedro, Cusco-Perú [Diet of phyllostomid bats of Kosñipata Valley, San Pedro, Cusco – Peru]. *Revista Peruana de Biología*, 19, 159–166.
- Malo de Molina, J. A., Velazco, S., Pacheco, V., & Robledo, J. C. (2011). Análisis de las vocalizaciones del murciélago longirrosto peruano *Platalina genovensium* Thomas, 1928 (Chiroptera: Phyllostomidae) [Analysis of vocalizations of Long-snouted Bat *Platalina genovensium* Thomas, 1928 (Chiroptera: Phyllostomidae)]. *Revista Peruana de Biología*, 18, 311–318.
- Ministerio de Agricultura. (2004). Decreto Supremo No. 034-2004-AG: Categorización de especies amenazadas de fauna silvestre. *El Peruano, Normas Legales*, pp. 276853–276855.
- Muchhala, N., & Jarrín-V, P. (2002). Flower visitation by bats in cloud forests of Western Ecuador 1. *Biotropica*, 34, 387–395.
- Muchhala, N., & Potts, M. D. (2007). Character displacement among bat-pollinated flowers of the genus *Burmeistera*: Analysis of mechanism, process and pattern. *Proceedings of the Royal Society of London B: Biological Sciences*, 274, 2731–2737.
- Nassar, J., Ramirez, N., & Linares, O. (1997). Comparative pollination biology of Venezuelan columnar cacti and the role of nectar-feeding bats in their sexual reproduction. *American Journal of Botany*, 84, 918–918.
- Ossa, G., Vilchez, K., & Valladares, P. (2016). New record of the rare long-snouted bat, *Platalina genovensium* Thomas, 1928 (Chiroptera, Phyllostomidae), in the Azapa valley, Northern Chile. *Check List*, 12, 1850.
- Pinto, R., Barria, I., & Marquet, P. A. (2006). Geographical distribution of *Tillandsia lomas* in the Atacama Desert, northern Chile. *Journal of Arid Environments*, 65, 543–552.
- Pruski, J. F., & Sancho, G. (2004). Asteraceae or compositae (aster or sunflower family). In: N. Smith, S. A. Mori, A. Henderson, W. D. Stevenson, & S. V. Heald (Eds.). *Flowering plants of the Neotropics* (pp. 33–39 + pl. 5). Princeton, NJ: Princeton University Press.
- Sahley, C. T., & Baraybar, L. (1996). Natural history of the long-snouted bat, *Platalina genovensium* (Phyllostomidae: Glossophaginae) in southwestern Peru. *Vida Silvestre Neotropical*, 5, 101–109.
- Sernanp-Perú. (2016). *Sernanp*. Retrieved from <http://www.sernanp.gob.pe>.
- Sikes, R. S., Gannon, W. L., & Animal Care, Use Committee of the American Society of Mammalogists. Guidelines of the American Society of Mammalogists for the use of wild mammals in research. *Journal of Mammalogy*, 92, 235–253.
- Simmons, N. B., & Wetterer, A. L. (2002). Phylogeny and convergence in cactophilic bats. In: T. H. Fleming, & A. Valiente-Banuet (Eds.). *Columnar cacti and their mutualists: Evolution, ecology, and conservation* (pp. 87–121). Tucson, AZ: University of Arizona Press.
- Tschapka, M., Dressler, S., & von Helversen, O. (2006). Bat visits to *Marcgravia pittieri* and notes on the inflorescence diversity within the genus *Marcgravia* (Marcgraviaceae). *Flora-Morphology, Distribution, Functional Ecology of Plants*, 201, 383–388.
- Tschapka, M., Sperr, E. B., Caballero-Martínez, L. A., & Medellín, R. A. (2008). Diet and cranial morphology of *Musonycteris harrisoni*, a highly specialized nectar-feeding bat in Western Mexico. *Journal of Mammalogy*, 89, 924–932.
- Velazco, P. M., Cadenillas, R., Centy, O., Huamán, L., & Zamora, H. (2013). New records of *Platalina genovensium* (Chiroptera, Phyllostomidae) and *Tomopeas ravus* (Chiroptera, Molossidae). *Mastozoología Neotropical*, 20, 425–434.
- Zamora, H. T., Sahley, C. T., Pacheco, C. E. M., Miranda, Y. E. A., Montes, A. C. E., & Chipana, A. P. (2013). The Peruvian long-snouted bat, *Platalina genovensium* Thomas, 1928 (Phyllostomidae, Lonchophyllinae), in the area of influence of the Peru LNG Gas Pipeline: Population status and recommendations for conservation. In: A. Alonso, F. Dallmeier, & G. P. Servat (Eds.). *Monitoring biodiversity on a trans-Andean megaproject* (pp. 110–123). Washington, DC: Smithsonian Institution Scholarly Press.